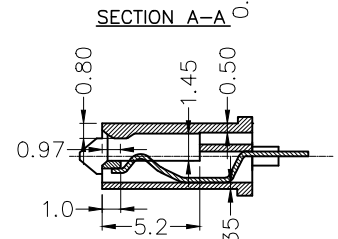
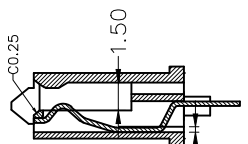
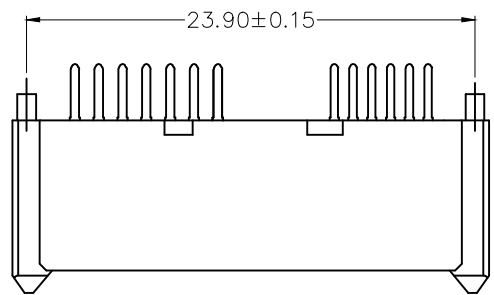


REV	LOCATIONS	DESCRIPTION	DATE	REVISER	APPD

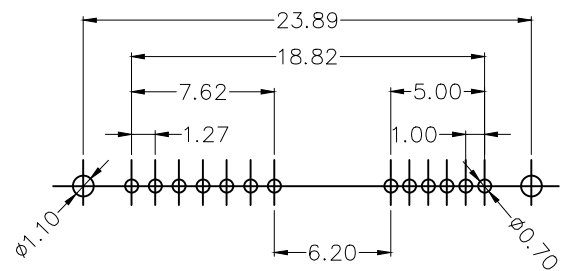
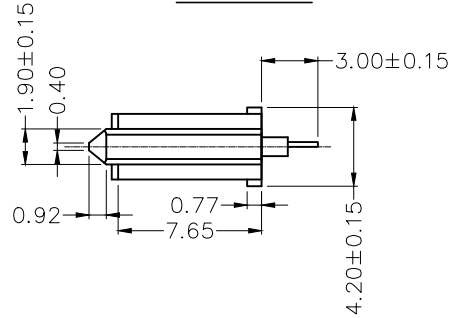
SPECIFICATIONS

Electrical
 Current Rating: 1.5A AC(rms)/DC
 Contact Resistance: 30 mΩ Max
 Insulation Resistance: 1000 MΩ MIN
 Withstanding Voltage: 500V AC r.m.s
 Temperature Range-Operating: -40°C~+85°C

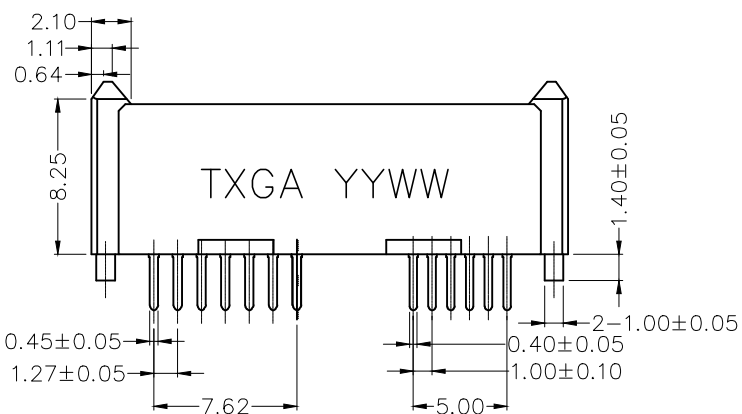
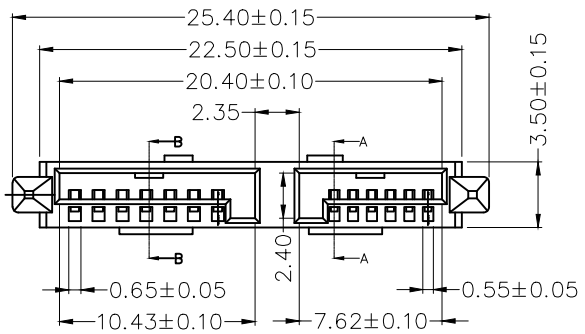
Material and Plating
 Housing: Thermoplastic UL94V-0, Black
 Terminal: Phosphor Bronze /Gold Plating on Contact Area,
 100u" Min tin Plating on Solderails, 50u" Min
 Nickel under plating Over All.



SECTION B-B



Recommended P.C.Board Layout
 Tolerances: ±0.05



Ordering Information

FST 13 02 - F D S 3 XX 3 BK K
 1 2 3 4 5 6 7 8 9 10 11

1	Category FST-SATA	2	Circuits 13-7+6circuits	3	Distinction No. 02	4	Type F-Female	5	Assembly Layout D-DIP	6	Entry Angle S-Vertical
7	Plating 3-Selective gold plated on contact area and tin on tails		8	Thickness of Gold Plating 01-1u" 05-5u" Custom Plate Available		9	Material-Resin 3-LCP	10	Color-Resin BK-Black	11	Packaging K-Tray

<p>THIRD ANGLE PROJECTION</p>	GENERAL TOLERANCES (UNLESS SPECIFIED) X.±0.30 X.±5° X.X±0.20 X.±2° X.XX±0.15 X.X±1° X.XXX±0.10 X.XX±0.5°		APPROVE BY LEO	DATE 17/NOV/21	PART NO. FST1302-FDS3XX3BKK	ITEM NO. FST1302	<p>Building Technology Cornerstone</p>	
	DESIGN UNITS Metric(mm)	SCALE 2.5:1	SIZE A4	CHECKED BY GISELLE	DATE 17/NOV/21	TITLE SATA 7+6P Female DIP		REV 0
THIS DRAWING CONTAINS INFORMATION THAT IS PROPRIETARY TO TXGA INDUSTRIAL ELECTRONICS(S.Z)CO.,LTD AND SHOULD NOT BE USED WITHOUT WRITTEN PERMISSION								